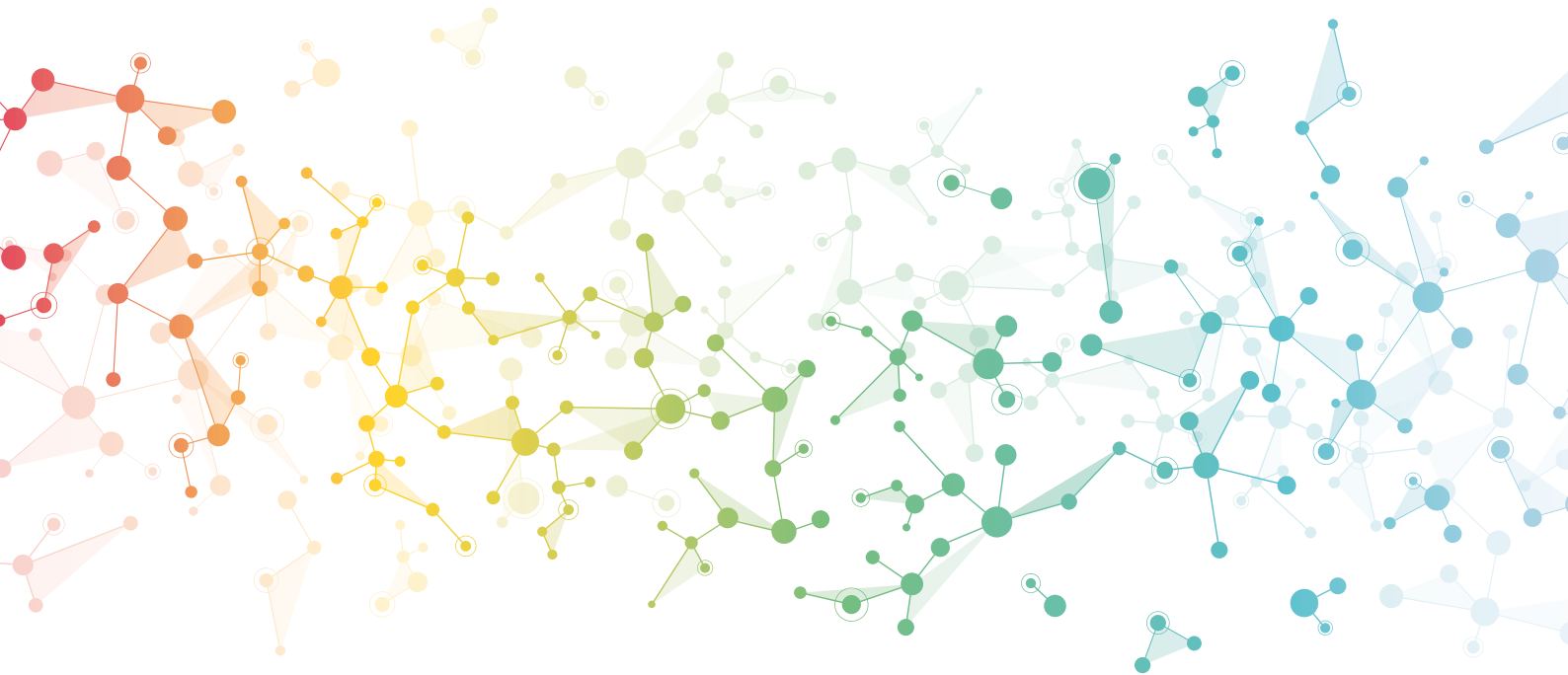


MIKROGEN

DIAGNOSTIK



MOLECULAR DIAGNOSTICS FOR INFECTIOUS DISEASES

*ampli*Cube real-time PCR product portfolio

RNA/DNA extraction

MDx workflow

High quality and modular designs *ampliCube* real-time PCR

Clinical
picture

Modular
components

Multiplex
PCR

Resistance
testing

Infectious
diseases



Easy and modular handling

- Complete PCR kits with ready-to-use reagents
- Uniform cycling program for all pathogens
- Toolbox system – combination of kits and panels according to individual needs

Safe diagnosis

- High sensitivity and specificity
- High safety: internal control for monitoring nucleic acid (RNA/DNA) extraction and real-time PCR inhibition in each reaction
- CE label: our PCR tests meet the high standard of the EC directive 98/79/EC on in vitro diagnostic medical devices

Compatible

- Compatible with most common real-time PCR cyclers and different RNA/DNA extraction methods






Smart and flexible According to your individual needs

Modular
Toolbox
System

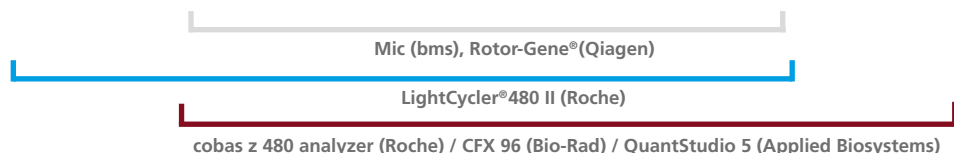
ampliCube real-time PCR kits and panels

Smart combination of pathogens and economic toolbox system for highest flexibility

* Internal Control

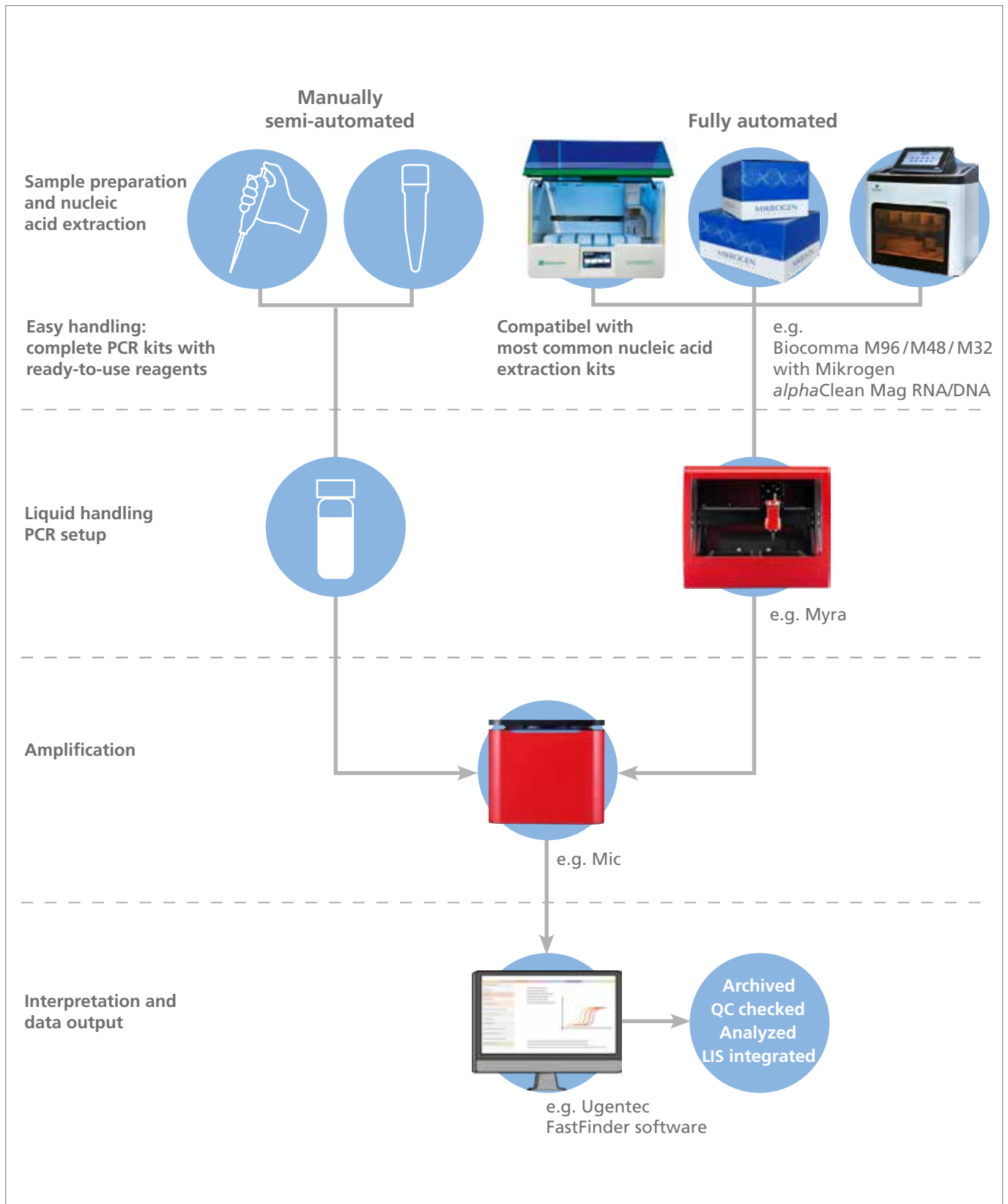
	Blue	Green	Yellow	Orange	Red	Dark red	Art. no.	rxn
 Respiratory Infections								
ampliCube Coronavirus Panel	–	MERS-CoV	SARS-Beta-CoV/ Sarbeco (screening)	HCoV (229E, HKU1, NL63, OC43)	IC*	–	50142	50
ampliCube Coronavirus SARS-CoV-2	–	SARS-Beta-CoV/ Sarbeco (screening)	SARS-CoV-2 (confirmation)	–	IC*	–	50143 50144	50 500
ampliCube Coronavirus SARS-CoV-2 plus	–	SARS-Beta-CoV/ Sarbeco (screening)	SARS-CoV-2 (confirmation)	Human endogenous Control	IC*	–	50148 50149	50 500
ampliCube Respiratory Flu & SARS-CoV-2	–	Influenza A	Influenza B	SARS-CoV-2 (confirmation)	IC*	SARS-Beta-CoV/ Sarbeco (screening)	50163 50164	50 500
ampliCube Respiratory Flu & SARS-CoV-2 LC	SARS-Beta-CoV/ Sarbeco (screening)	Influenza A	Influenza B	SARS-CoV-2 (confirmation)	IC*	–	50173 50174	50 500
ampliCube Respiratory Bacterial Panel 1.1	–	Chlamydomphila pn.	Mycoplasma pn.	Legionella pn.	IC*	Legionella spp.	50151	50
ampliCube Respiratory Bacterial Panel 1.1 LC	Legionella spp.	Chlamydomphila pn.	Mycoplasma pn.	Legionella pn.	IC*	–	50153	50
ampliCube Respiratory Bacterial Panel 2	–	Bordetella pertussis	Bordetella parapertussis	Bordetella holmesii	IC*	–	50111	50
ampliCube Respiratory Bacterial Panel 3	–	Streptococcus pn.	Staphylococcus aureus	Haemophilus influenzae	IC*	–	50121	50
ampliCube Respiratory Bacterial Panel 4	–	Moraxella catarrhalis	Klebsiella pn./oxytoca	–	IC*	–	50131	50
ampliCube Respiratory Viral Panel 1	–	Influenza A	Influenza B	Influenza A H1N1	IC*	–	50102	50
ampliCube Respiratory Viral Panel 2	–	Parainfluenza 1-4	Bocavirus	–	IC*	–	50112	50
ampliCube Respiratory Viral Panel 3	–	Parachovirus	Metapneumovirus	RSV (A,B)	IC*	–	50122	50
ampliCube Respiratory Viral Panel 4	–	Rhino-/Enterovirus	–	Adenovirus	IC*	–	50132	50
ampliCube Respiratory Viral Panel 5	–	Influenza A	Influenza B	RSV (A,B)	IC*	–	50152	50
 Sexually Transmitted Infections	Blue	Green	Yellow	Orange	Red	Dark red	Art. no.	rxn
ampliCube STD Panel 1	–	Chlamydia trachomatis	Neisseria gonorrhoeae	Mycoplasma genitalium	IC*	–	50301	50
ampliCube STD Panel 2.1	–	Trichomonas vaginalis	Mycoplasma hominis	Ureaplasma urealyticum	IC*	Ureaplasma parvum	50322	50
ampliCube STD Panel 2.1 LC	Ureaplasma parvum	Trichomonas vaginalis	Mycoplasma hominis	Ureaplasma urealyticum	IC*	–	50312	50
ampliCube STD Panel 3	–	HSV 1/2	Treponema pallidum	–	IC*	–	50303	50
 Gastrointestinal Infections	Blue	Green	Yellow	Orange	Red	Dark red	Art. no.	rxn
ampliCube Gastrointestinal Bacterial Panel 1	–	Campylobacter	Salmonella	Yersinia enterocolitica	IC*	–	50001	50
ampliCube Gastrointestinal Bacterial Panel 2	–	VTEC (STX1+2)	Shigella/EIEC	ETEC	IC*	–	50011	50
ampliCube Gastrointestinal Viral Panel 1	–	Norovirus (GI-II)	Rotavirus	Adenovirus	IC*	–	50002	50
ampliCube Gastrointestinal Viral Panel 2	–	Sapovirus	–	Astrovirus	IC*	–	50012	50
 Hepatitis E	Blue	Green	Yellow	Orange	Red	Dark red	Art. no.	rxn
ampliCube HEV 2.0 Quant	–	Hepatitis E virus	–	–	IC	–	55002	50
 Multiple Drug Resistance	Blue	Green	Yellow	Orange	Red	Dark red	Art. no.	rxn
ampliCube MDR Panel 1	–	NDM	KPC	GIM	IC*	–	50401	50
ampliCube MDR Panel 2	–	NDM	KPC	SPM	IC*	–	50402	50
ampliCube MDR Panel 3	–	CTX-M15 (group 1)	–	CTX-M14 (group 9)	IC*	–	50403	50
ampliCube MDR Panel 4	–	IMP	VIM	OXA-48-like	IC*	–	50404	50
ampliCube MDR Panel 5	–	NDM	OXA-23-like / OXA-24/ 40-like; OXA-58-like	ISAbA1 / OXA-51-like	IC*	–	50405	50
ampliCube MDR Panel 6	–	cfr (A/B) / optrA	vanA	vanB	IC*	–	50406	50

Validated real-time PCR cycler:



Complete and convenient Our MDx workflow solutions

Extraction – Liquid Handling – Amplification – Interpretation
Exemplary workflow at Mikrogen



Consumables can be purchased from MIKROGEN.

Safe and compact Setup, amplification and interpretation

Combine Myra and Mic with our *ampliCube* products

Space-saving instruments for fast and safe reaction setup and amplification



Myra – Liquid handling system

Dimensions (H/W/L)	31 x 35 x 46 cm
Weight	9 kg
Samples	flexible
Art. no.	31269



Mic – qPCR cycler

Dimensions (H/W/L)	13 x 15 x 15 cm	
Weight	2 kg	
Samples	48	
Art. no.	31154 (RUO)	31385 €€ (IVD)

Consumables and various adaptors (for Myra) can be purchased from MIKROGEN.

Flexible and easy application of *ampliCube* real-time PCR kits

Use of various real-time PCR cyclers and easy interpretation via supported software possible

Cycler	<i>ampliCube</i> product line	FastFinder software
Mic (Magnetic Induction Cycler)	validated	available soon
Roche LightCycler® 480 Instrument II	validated	available
Roche cobas z 480 Analyzer	validated	–
Qiagen Rotor-Gene® Q	validated	–
Bio-Rad CFX 96	validated	–
Applied Biosystems (QuantStudio™ 5 Dx)	validated	–
Stratagene Mx3000P	compatible	–

Information for other PCR cyclers on request

Fast and clean Extraction with benchtop instruments

Biocomma instruments for nucleic acid (RNA/DNA) extraction

Automated extraction based on magnetic-bead technology for different throughput levels



Biocomma M96

Dimensions (H/W/L)	76 x 48 x 57 cm
Weight	59 kg
Samples	96
Art. no.	31292



Biocomma M48

Dimensions (H/W/L)	54 x 50 x 46 cm
Weight	40 kg
Samples	48
Art. no.	31328



Biocomma M32

Dimensions (H/W/L)	40 x 42 x 44 cm
Weight	25 kg
Samples	32
Art. no.	31291

Consumables can be purchased from MIKROGEN.

*alpha*Clean product line – nucleic acid (RNA & DNA) extraction kits

High yields from various starting materials by choosing from different extraction solutions

Products and reagents for sample preparation	PE	Art. no.
<p><i>alpha</i>Clean Mag RNA/DNA €€</p> <p>Extraction system based on magnetic beads for isolation of nucleic acids (RNA/DNA) from clinical sample materials (e.g. whole blood, urine, tissue, stool, etc.), food and environmental samples. Ideal for use with Biocomma extractors (M96, M48 and M32), use with further magnet-particle based extractors is also possible.</p>	<p>200 Isolations</p> <p>800 Isolations</p>	<p>831002</p> <p>831028</p>
<p><i>alpha</i>Clean Proteinase K</p> <p>Proteinase K from Triticirachium album, Molecular Biology Grade, lyophilized, Activity: ≥ 2.5 U/mg (Casein, 37°C).</p>	<p>200 mg</p> <p>800 mg</p>	<p>831025</p> <p>831031</p>
<p><i>alpha</i>Clean Pure RNA/DNA €€</p> <p>Spin column based system for isolation of nucleic acids (RNA/DNA) from clinical sample materials (e.g. whole blood, urine, tissue, stool, etc.), food and environmental samples.</p>	<p>100 Isolations</p> <p>200 Isolations</p>	<p>831026</p> <p>831004</p>
<p><i>alpha</i>Clean Collection tube</p> <p>2 ml reaction tubes, suitable for <i>alpha</i>Clean Pure RNA/DNA spin columns. DNase-, RNase- and pyrogen-free.</p>	<p>1000</p>	<p>831027</p>

