

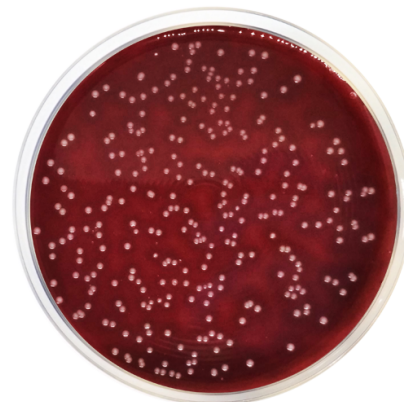
Columbia Agar Base EP/USP/ISO

N° Cat: 1104

N° Batch: 204261

Re-test Date: 4/2025

Regulations: USP / ISO 10272 / ISO 11133 / European Pharmacopoeia



Formula in g/l

| | | | |
|-----------------------------|------|--------------------|---|
| Bacteriological agar | 13,5 | Maize starch | 1 |
| Pancreatic digest of casein | 10 | Sodium chloride | 5 |
| Yeast extract | 5 | Meat peptic digest | 5 |
| Heart pancreatic digest | 3 | | |

Quality control

| Solubility | Appearance | Color of the dehydrated medium | Color of the prepared medium | Final pH (25°) | Batch pH |
|------------|-------------|--------------------------------|------------------------------|----------------|----------|
| w/o rests | Fine powder | Beige | Cherry red opaque | 7,3±0,2 | 7,2 |

Microbiological test

According to European Pharmacopoeia; Clostridium sporogenes:
Incubation conditions: (30-35 °C, anaerobic conditions / 48-72 h).
Inoculation conditions: (<=100 CFU).

According to ISO 10272; Campylobacter jejuni, Campylobacter coli:
Incubation conditions: Productivity qualitative (41,5±1 °C, microaerobic atmosphere / 24-48 h).
Inoculation conditions: (10³-10⁴ CFU).
Reference media: Media bathch Blood Agar already validated.

Rest of strains; Neisseria meningitidis, Streptococcus pyogenes, Staphylococcus aureus, Streptococcus pneumoniae:
Incubation conditions: (35±2 °C, 5-10% CO2 atmosphere / 48 h).

| Microorganisms | Specification | Characteristic reaction |
|------------------------------------|---------------|-------------------------|
| Clostridium sporogenes ATCC 11437 | Good growth | |
| Neisseria meningitidis ATCC 13090 | Good growth | |
| Streptococcus pyogenes ATCC 19615 | Good growth | Beta hemolysis |
| Staphylococcus aureus ATCC 25923 | Good growth | Beta/Gamma hemolysis |
| Campylobacter jejuni ATCC 29428 | Good growth | |
| Campylobacter jejuni ATCC 33291 | Good growth | |
| Campylobacter coli ATCC 43478 | Good growth | |
| Streptococcus pneumoniae ATCC 6305 | Good growth | |

This certificate is an electronic copy of the certificate available in our laboratory and does not require signature.